

## Configuring Netscape Mail

Before you begin, you will need the following account details, supplied to you by FunnelWeb Internet:

- Your UserName
- Your Password

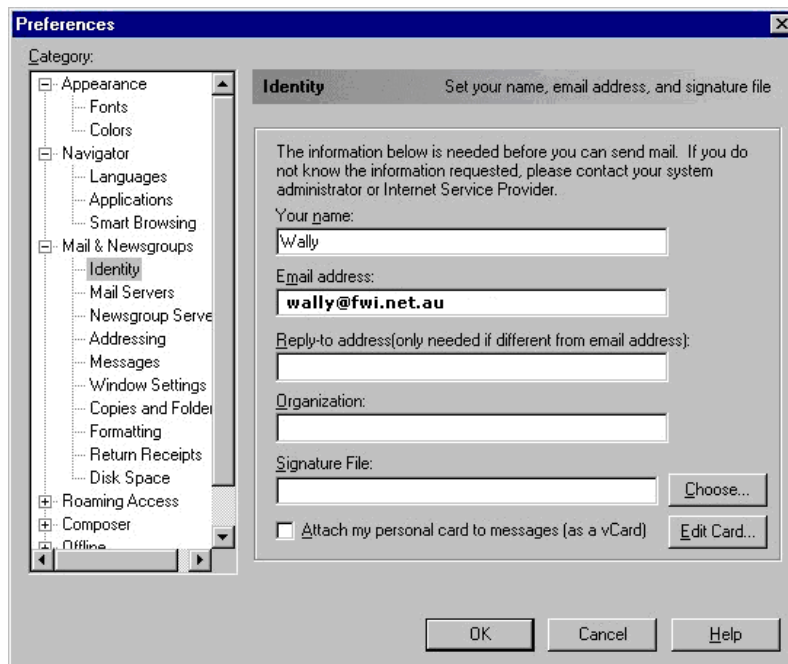
### Please Note:

FunnelWeb Internet's Support Team cannot offer support for general software related problems. We can only assist you with connectivity of your operating system to our system and basic configuration of your browser software.

### Let's start...

Start Netscape Navigator from the shortcut on the *start* menu.

When the Netscape Navigator main window appears select the *Preferences* menu item from the *Edit* menu. Select *Mail and Newsgroups* from the list of options on the left of the screen, then *Identity* from the sub-list.



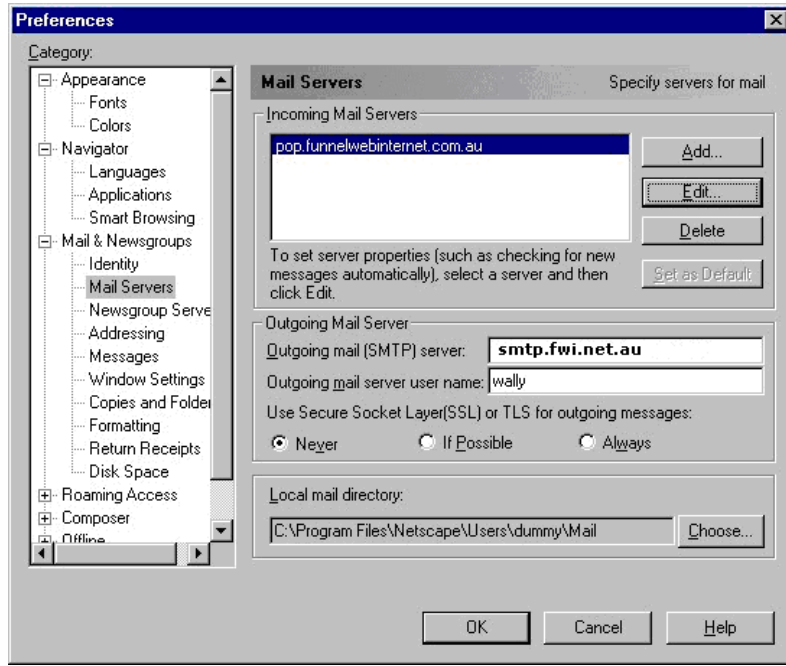
In the field titled *Your Name*, enter your full name.

In the field titled *Email Address*, enter your user name followed immediately by @fwi.net.au as indicated on your Welcome letter.

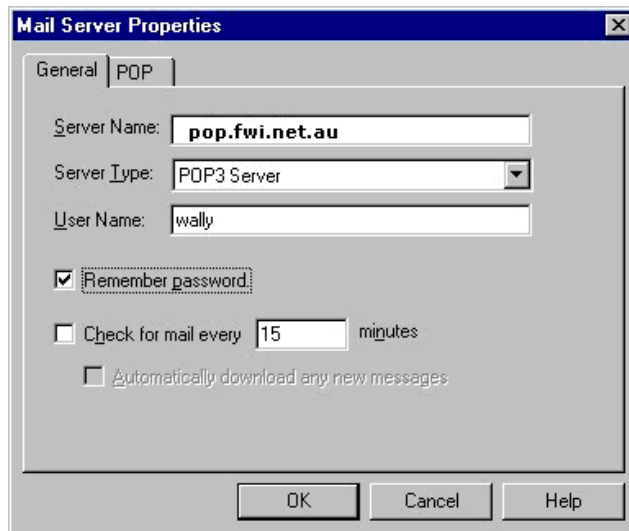
Now click the *Mail Servers* option.

Enter *smtp.fwi.net.au* in the field labeled *Outgoing mail (SMTP) server*.

Enter your *UserName* in the *Outgoing mail server UserName* field.



Click the Add button in the Incoming Mail Servers section.



Enter *pop.fwi.net.au* in the field labeled *Server Name*.

Select POP3 from the list of Server types.

Enter your *UserName* in the *UserName* field.

Click Ok. Click Ok again.

You have now configured Netscape Messenger to send and receive your Internet E-mail!

If you have any difficulties, please contact FunnelWeb Internet on 1300 360 024 or email [support@fwi.net.au](mailto:support@fwi.net.au).

