

Configuring Internet Browser Netscape Navigator 4.7

Before you begin, you will need the following account details, supplied to you by FunnelWeb Internet:

- Your UserName
- Your Password

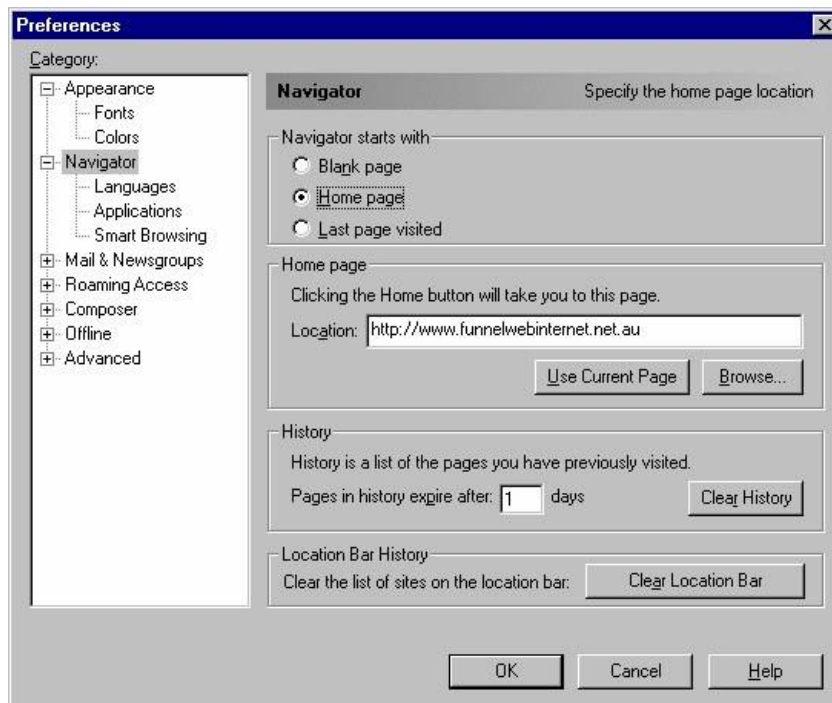
Please Note:

FunnelWeb Internet's Support Team cannot offer support for general software related problems. We can only assist you with connectivity of your operating system to our system and basic configuration of your browser software.

Let's start...

Start Netscape Navigator from the shortcut on the start menu.

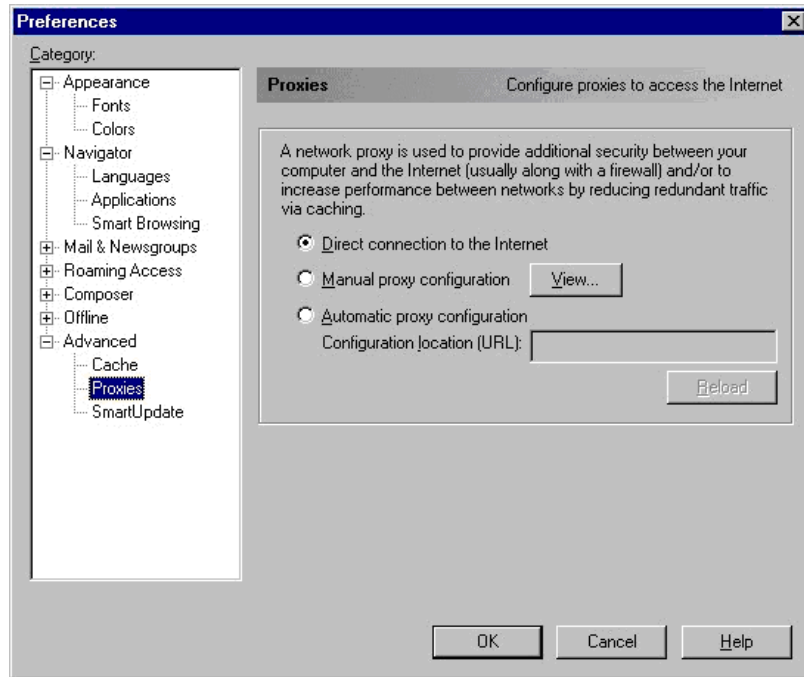
When the Netscape Navigator main window appears click on the "Edit" pull-down menu and select "Preferences".



In the Home Page section in the centre of the screen enter the FunnelWeb Internet home page location as your default home page - <http://www.funnelwebinternet.com.au>.

Next, click on the small plus sign next to the Advanced label on the bottom left of the window.

In the "Proxies" section select the box titled "Direct Connection to the Internet".



If you have any difficulties, please contact FunnelWeb Internet on 1300 360 024 or email support@fwi.net.au.